

# OXFORD LAFAYETTE CHAMBER OF COMMERCE MEMBERSHIP APPLICATION

PAM SWAIN, PRESIDENT/CEO

NAME OF FIRM: \_\_\_\_\_ PRIMARY CONTACT: \_\_\_\_\_

MAILING ADDRESS: \_\_\_\_\_ STREET ADDRESS: \_\_\_\_\_

CITY, STATE, ZIP: \_\_\_\_\_

TELEPHONE: \_\_\_\_\_ FAX: \_\_\_\_\_

EMAIL: \_\_\_\_\_ WEB SITE: \_\_\_\_\_

FACEBOOK @: \_\_\_\_\_ TWITTER @: \_\_\_\_\_ INSTAGRAM @: \_\_\_\_\_

Visit [www.oxfordms.com](http://www.oxfordms.com) to select your membership categories

MEMBERSHIP CATEGORY 1: \_\_\_\_\_ MEMBERSHIP CATEGORY 2: \_\_\_\_\_

REFERRED BY: \_\_\_\_\_

**INVESTMENT:** Membership dues are considered to be a business expense by the IRS and are tax deductible as such.

- Business Base Dues (covers first full-time employee), \$300 + Fair Share computation: Number of full-time employees \_\_\_\_ x \$10= \_\_\_\_\_
- Individual, \$150     Non-Profit, \$150     Additional Representative Listing, \$150     Retiree, \$125
- Associate Business Membership (Each additional business listing if you have multiple business memberships), \$150
- Student Entrepreneur, \$75

\$ \_\_\_\_\_ TOTAL DUES INVESTMENT

### PREFERRED PAYMENT OPTION:

Automatic Electronic Withdrawal (*Worry-free option*):  Annually  Semi-Annually  Quarterly

Checking Account Number: \_\_\_\_\_ Routing Number: \_\_\_\_\_

First year's full membership dues must be paid in advance. Auto Electronic Withdrawal begins year two.

Pay Now:  Credit Card  Visa  MC  AmEx # \_\_\_\_\_ Expiration: \_\_\_\_\_ Cust. Code: \_\_\_\_\_

Bill Me:  Annually  Semi-Annually

Complete and return to: Oxford-Lafayette County Chamber of Commerce, Post Office Box 147, 299 Jackson Avenue West, Oxford 38655

Signature: \_\_\_\_\_ Date: \_\_\_\_\_



### LEARNING

Get a competitive edge over non-members with exclusive training opportunities on a variety of hot topics.



### HAVE A VOICE

Gain a say in the community through chamber advocacy efforts on issues important to business and quality of life.



### DISCOUNTS

Increase your purchasing power through member discounts, coupons, and perks!



### VISIBILITY & CREDIBILITY

Stand out and get noticed in your community. Raise your reputation through membership.



### NETWORKING

It's not just who you know, it's who others know. Networking is a powerful tool.

# WHY MEMBERSHIP IS RIGHT FOR YOU

OXFORD LAFAYETTE CHAMBER OF COMMERCE

## 1 VISIBILITY

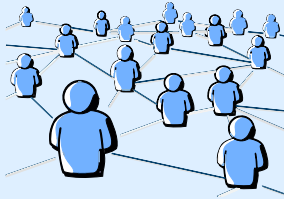
**Increase Your Visibility and Reputation through Membership.** Stand out from the crowd and get noticed! There are numerous ways to elevate your reputation through membership, such as sponsorships at big events, a listing in the annual Community Guide and Membership Directory, and many more. Take advantage of these opportunities to gain high visibility and make a name for yourself.

## 2 NETWORKING

**Leverage the Power of Networking.** To expand your reach and make valuable connections, networking is an essential tool. Take part in a wide array of events, including our Annual Red Carpet Gala, and consider joining one of our several committees. These committees actively support our business community and work towards enhancing our overall quality of life.

## 3 RESOURCES

**Explore Our Resources and Stay Connected With Our Weekly LOU View E-Newsletter.** Our organization offers a variety of resources, including a listing of newcomer requests for the area, access to the Chamber meeting room, and 100% tax-deductible membership. Stay up-to-date on community events and happenings by subscribing to our weekly LOU View e-Newsletter.



### MANY NETWORKING OPPORTUNITIES!

- Monthly Chamber After Hours
- Monthly Young Professionals of Oxford Socials
- Monthly new member training
- Monthly Chamber 101 training
- Annual Red Carpet Gala
- Chamber Golf Classic
- Christmas Cocktail Party
- Chamber Annual Meeting
- And much more!

## OUR MISSION

Our mission is to **undertake** those programs and projects which improve the **quality of life** for our area. By seeking a **positive** business climate conducive to the **growth** of our private enterprise system, raising per capita **income**, and providing **strong** financial, physical, and human resources, we create a **better life for all of our citizens.**

“

**SETTING AND ACHIEVING GOALS THAT WILL ENSURE OXFORD AND LAFAYETTE COUNTY OF REACHING ITS FULL POTENTIAL**

”

 @OXFORDMSCHAMBER

 @OXFORDMSCHAMBER

 @OXFORDMSCHAMBER

 OXFORD LAFAYETTE CHAMBER OF COMMERCE